

DAIRY EXPORTS SUPPORT A STRONG WISCONSIN



Dairy farming and cheese making is Wisconsin's birthright — it's in our blood, it's in the dirt beneath our feet, it's in the air we breathe — it's who we are. We've been making cheese before we were even a state.

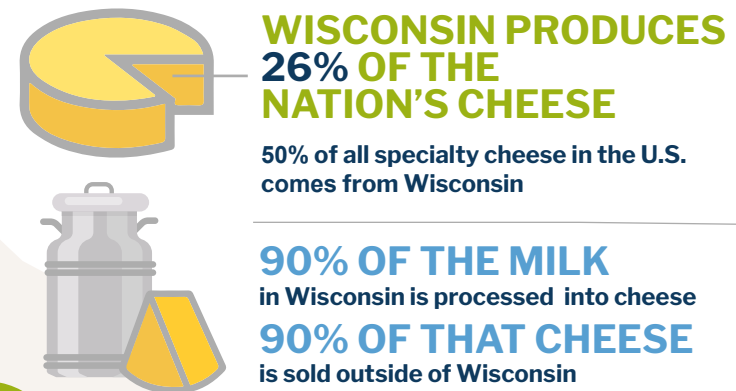
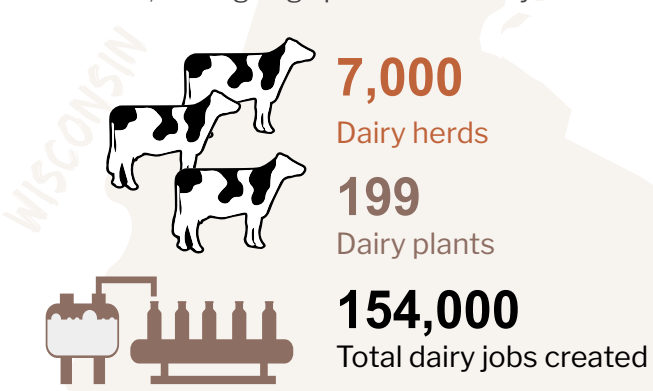
Today, dairy remains an important \$45.6 billion industry, accounting for nearly half of the state's agriculture economic impact. One can't drive more than 10 minutes before finding themselves moving alongside the rolling hills, watching a herd of cows grazing in the lush green pastures, or seeing the signs of a cheese factory that's been humming since 3am to make fresh cheese curds.

The state's dairy heritage is rooted in dairy farming and cheese making. One could say the state is the Silli-Cow Valley for dairy farming. **The state boasts nearly a quarter of the nation's farms.** People from around the world come to Wisconsin to learn about the most innovative, cutting edge practices in dairy.

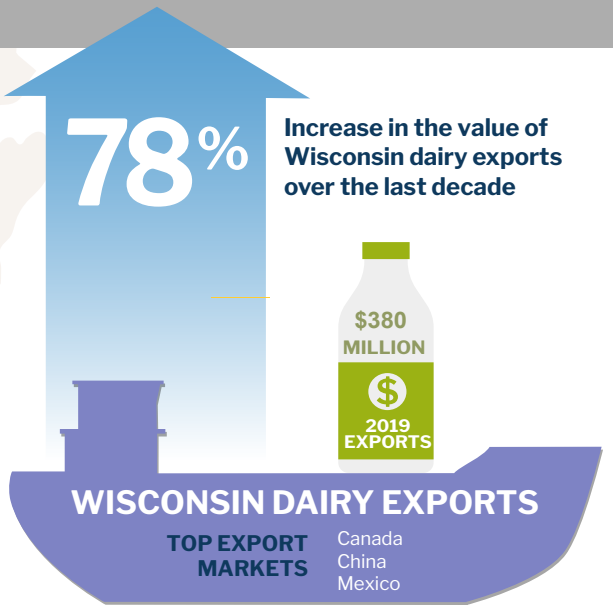
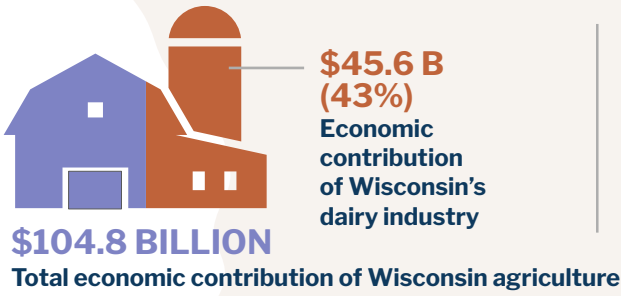
Our cheese makers have won over 6,000 cheese awards — more than any other state or country in the world. This is due to our legacy of premium quality and innovation. Wisconsin is the only state that requires a license to make cheese and is the only state with a Master Cheesemaker program outside of Europe. (We don't like to brag, but we also make a lot of cheese — if we counted our production alone, we'd be the world's fourth largest cheesemaker.) In Wisconsin, we are a world of cheese in one state.

With flattening population growth in the U.S. and rapidly increasing demand for dairy imports in emerging markets like Asia and South America, exports are essential to maintaining economic viability for Wisconsin's residents.

We need to work together and bring a diverse range of experiences to develop sound trade policies that benefit Wisconsin dairy and the communities it supports.



ECONOMIC IMPACT



DATA SOURCES:
U.S. Department of Agriculture
The Contribution of Agriculture to the Wisconsin Economy: An Update for 2017.
<https://economicdevelopment.extension.wisc.edu/files/2019/08/Contribution-of-Ag-to-WI-Econ-4-Update.pdf>
U.S. Census